

Easton Town Center – Phase 2

Client: Georgetown Properties
Engineers Estimate: 2.0M



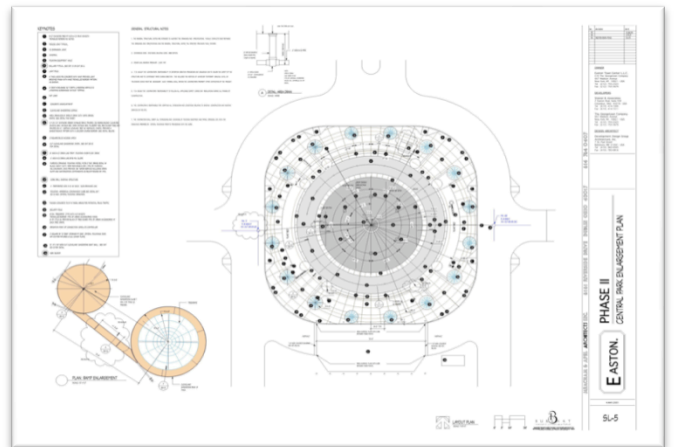
Central Park Fountain



Streetscape



Central Park Fountain Rendering



Central Park Construction Document – Layout Plan

Project Description:

Easton Town Center - Phase 2 is a major expansion of the highly successful entertaining, dining, and upscale shopping district. Major anchors such as Nordstroms, Macys serve as a backdrop to a grid of urban streetscapes. A grand fountain known as Central Park serves gathering space and focal point to Phase 2. James Burkart Associates was responsible for the hardscape, landscape, and irrigation packages of the development. The project was completed in 2001.

Easton was the first major project assigned to me as a professional. I was responsible for compiling the construction documents, feasibility studies, cost estimates, and specifications. I carried out the project coordination and collaboration with client, product manufacturers, construction contractors, and team members. I handled the construction observation through project completion.